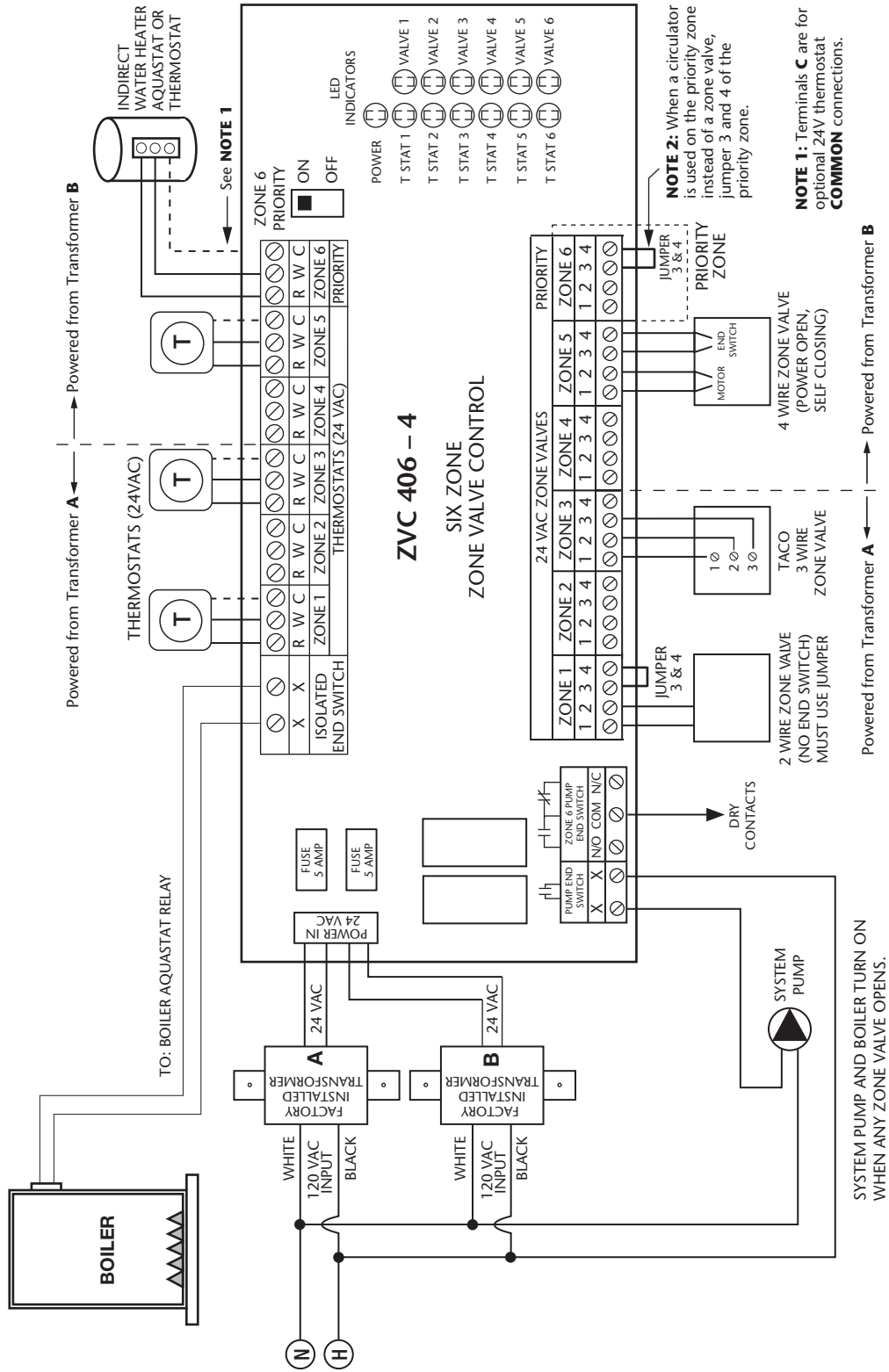


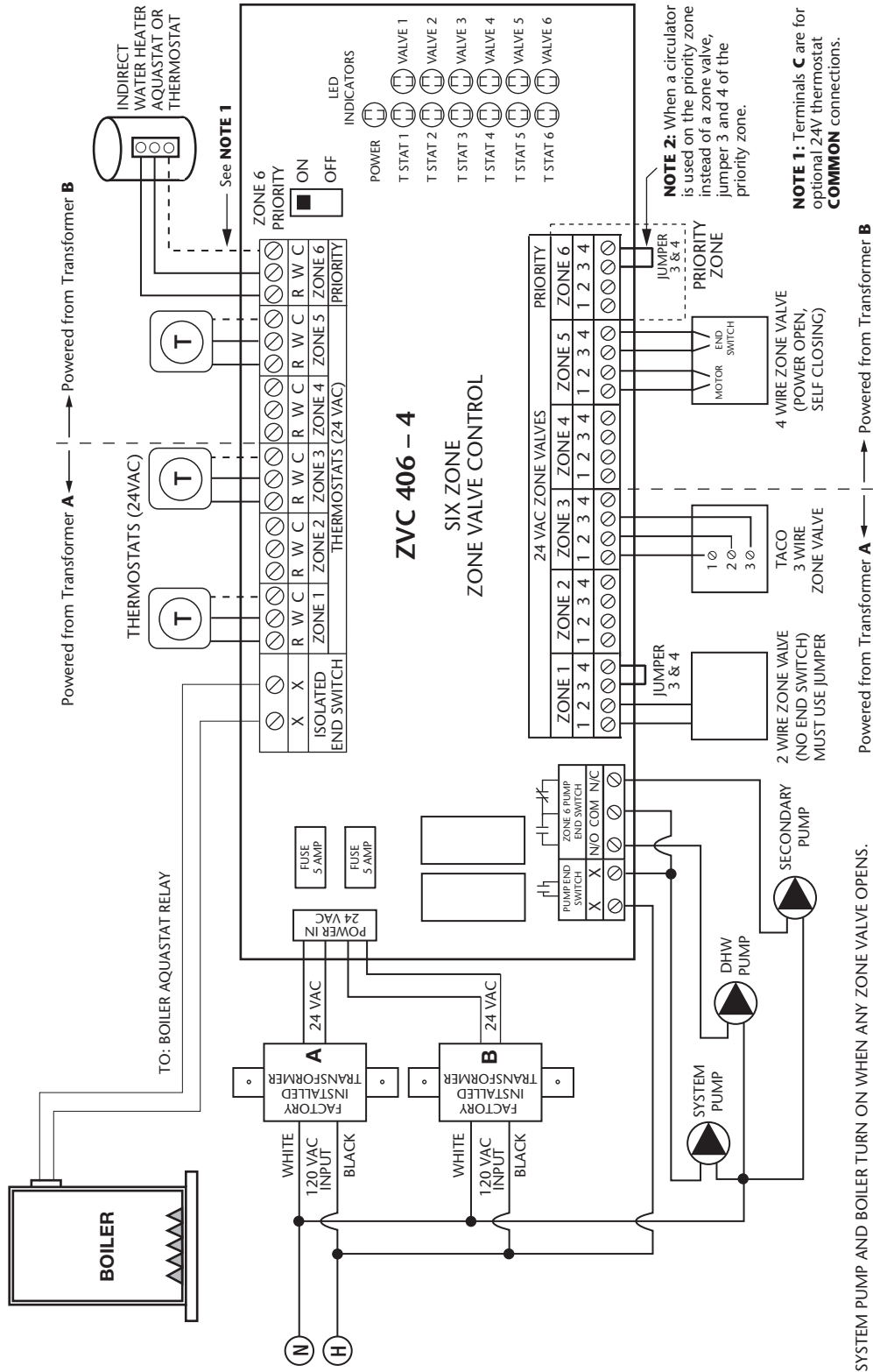
# ZVC403/404/405/406 with System Pump



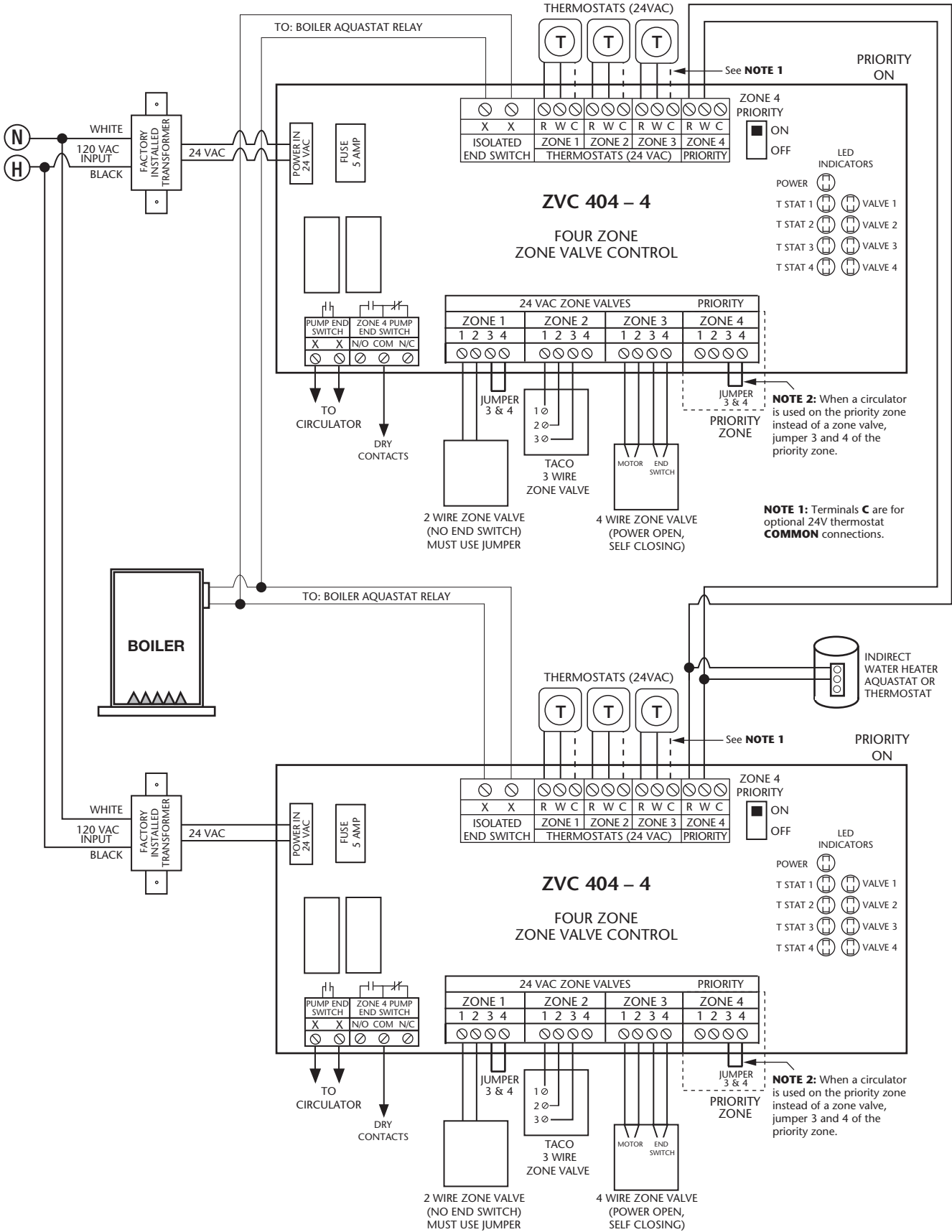




# ZVC403/404/405/406 with System, DHW and Secondary Pumps



## 2 ZVC403/404/405/406 Connected Together with Priority



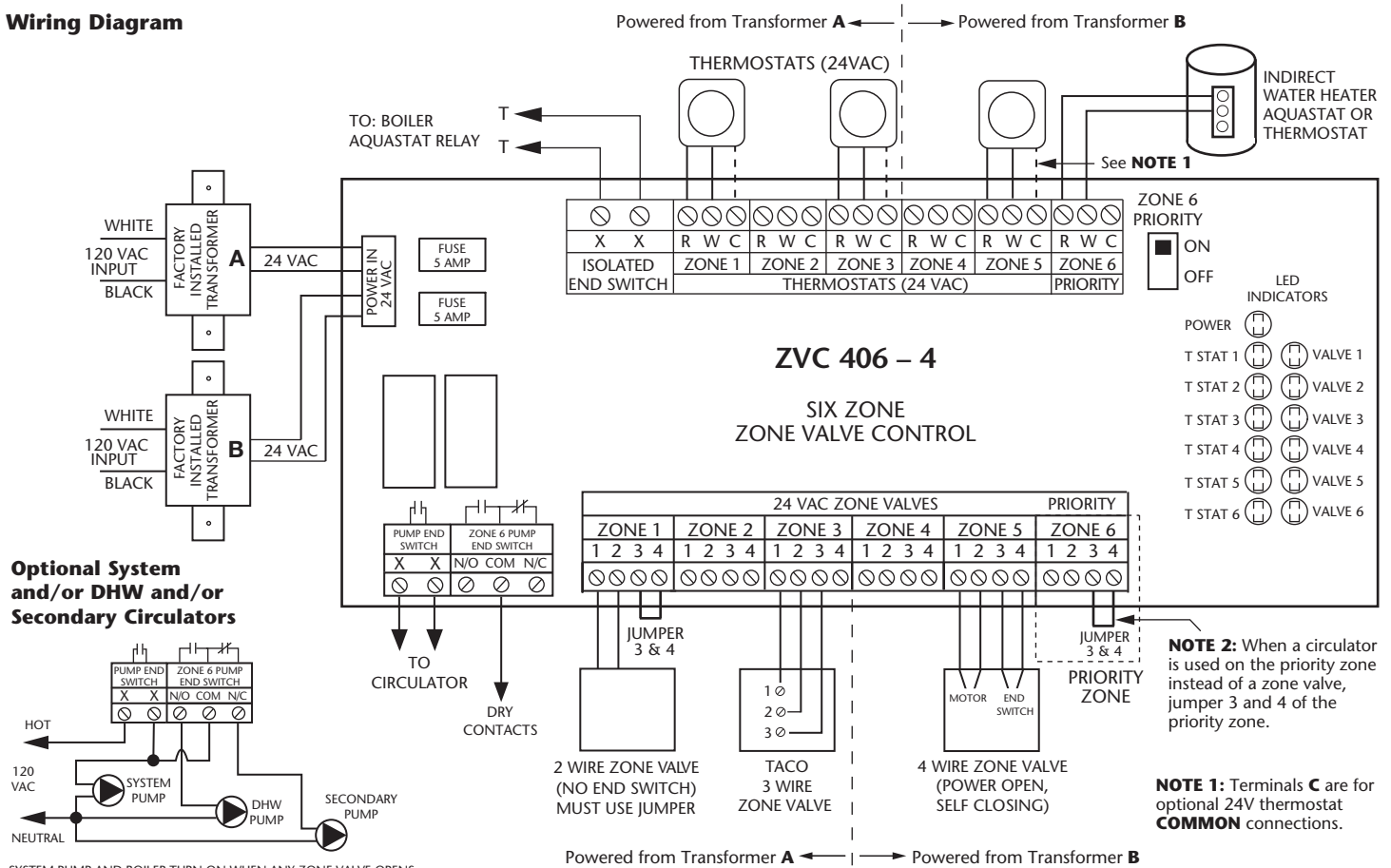




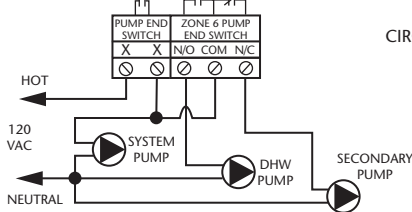
# Instruction Sheet

## ZVC403/404/405/406-4 Zone Valve Control

### Wiring Diagram



### Optional System and/or DHW and/or Secondary Circulators



SYSTEM PUMP AND BOILER TURN ON WHEN ANY ZONE VALVE OPENS.  
 DHW PUMP TURNS ON ONLY WHEN PRIORITY ZONE CALLS.  
 SECONDARY PUMP COMES ON WHEN ANY ZONE CALLS EXCEPT PRIORITY ZONE.

**Operation/External Diagnostics:** When any thermostat calls for heat, the appropriate zone valve is energized and the yellow light goes on. When the zone valve is fully open, the red light goes on and energizes the end switch relay. The green light should always be on, indicating that power is connected.

**Priority Operation:** When zone 6 is switched to the priority setting and is actuated, all other zones will stop operation until zone 6 is satisfied. When zone 6 is not switched to priority, all zones will operate independently. **Note:** When a circulator is used on the priority zone instead of a zone valve, jumper 3 and 4 of the priority zone.

**Priority Protection Operation:** When the priority zone calls continuously for more than one hour, power is returned to all the other zones, allowing each zone to function independently. Once the priority zone is satisfied, the control's auto-reset is activated and the priority zone is again allowed to have priority for up to one hour starting from when it calls next.

**The Taco Connection:** Combine the reliability of the Taco Zone Valves, Priority Zoning Circulators, Thermostats, and the "00" family

of circulators with the advanced features of the Taco Zone Controls to achieve total system integration. No matter the application, Taco now provides the products to maximize system performance while simplifying both installation and service.

- Features:**
- External Indicator Lights
  - Switchable Priority
  - Priority Protection
  - Simplified Wiring
  - Works with 2, 3, or 4-Wire Zone Valves
  - Compact Design
  - Fuse Protected
  - 100% Factory Tested
  - Isolated End Switch
  - Extra Set of Dry Contacts
  - Contractor Friendly PC Board Layout
  - Universal Thermostat Compatibility
  - UL Approved
  - Sturdy Screw Connections
  - Extended 3 Year Warranty
  - Made in the USA

### Specifications:

PRODUCT NUMBER	NUMBER OF ZONES	INPUT VOLTAGE	MAX 24 VAC OUTPUT @ 25°C	TYPE 1 ENCLOSURE WIDTH	HEIGHT	DEPTH
ZVC406-4	6 with Priority	120/60/1 VAC, 3A	24 VA per Zone 40 VA per Transformer	12 1/4"	8"	3"

The pump end switches are rated 1/2 hp, 5 amps at 120 VAC. The main and priority end switch connections are rated 24 VAC, 1 amp. All thermostat and zone valve connections supply a 24 VAC class 2 output.

**WARNING:** Wiring connections must be made in accordance with all applicable electrical codes. Use copper wire only. 120 VAC wiring must have a minimum temperature rating of 75°C. Failure to follow this instruction can result in personal injury or death and/or property damage. 12-18 gauge wire recommended for 120 VAC connections, 14-22 gauge wire for thermostat connections, and 14-22 gauge wire for 24 VAC source connections.

This device complies with part 15 of the FCC Rules. Operation is subject to the following two conditions: (1) This device may not cause harmful interference, and (2) this device must accept any interference received, including interference that may cause undesired operation.

**Do it Once. Do it Right.®**

**TACO, INC.**, 1160 Cranston Street, Cranston, RI 02920 Telephone: (401) 942-8000 FAX: (401) 942-2360.  
**TACO (Canada), Ltd.**, 8450 Lawson Road, Unit #3, Milton, Ontario L9T 0J8. Telephone: 905/564-9422. FAX: 905/564-9436.  
 Visit our web site at: <http://www.taco-hvac.com>

Printed in USA  
 Copyright 2010  
 TACO, Inc.

# TACO Zone Controls Cross-Reference

	TACO	ARGO	ERIE	HONEYWELL
<b>SWITCHING RELAYS</b> 1 Zone Switching Relay (DPDT) 1 Zone Switching Relay 1 Zone Switching Relay with Outdoor Reset 2 Zone Switching Relay with Priority 3 Zone Switching Relay with Priority 4 Zone Switching Relay with Priority 6 Zone Switching Relay with Priority	SR501 SR501-HC SR501-OR SR502 SR503 SR504 SR506	AR822II AR-861-2II (3) AR-861-3II (3)	SR100 SR201 SR301 SR601 R601 (4)	RA89A (2), RA845A (1), RA832A (1), R8845U, RA889A
<b>EXPANDABLE SWITCHING RELAYS</b> 1 Zone Switching Relay with Priority 3 Zone Switching Relay with Priority 4 Zone Switching Relay with Priority 6 Zone Switching Relay with Priority	SR501-EXP SR503-EXP SR504-EXP SR506-EXP	ARM-3P (5,6) ARM-4P (5,6) ARM-6P (5,6)		AQ25042B (9)
<b>ZONE VALVE CONTROLS</b> 3 Zone Valve Control with Priority 4 Zone Valve Control with Priority 5 Zone Valve Control with Priority 6 Zone Valve Control with Priority	ZVC403 (7) ZVC404 (7) ZVC405 (7) ZVC406 (7)	AZ-3 AZ-4P AZ-5 AZ-6P	VL500 (8) VL500 (8)	
<b>EXPANDABLE ZONE VALVE CONTROLS</b> 4 Zone Valve Control with Priority 6 Zone Valve Control with Priority	ZVC404-EXP ZVC406-EXP			AQ25044B (9)